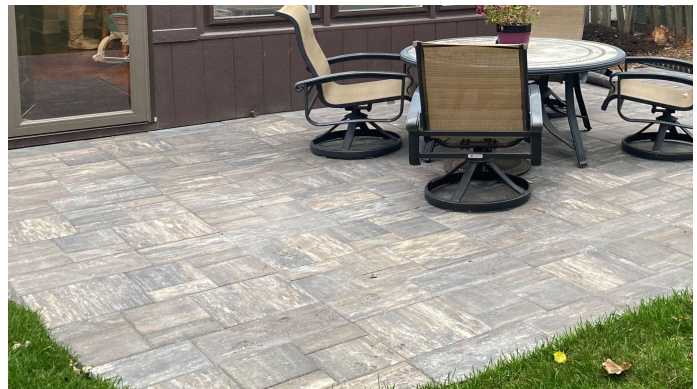


## *Hardscapes - What to know when planning your patio or walkway*

### **Concrete Pavers - cost \$7 to \$14 per sq ft**

- Most common form of pavers
- Lower cost than other stone options
- Unlimited paver styles, colors, and sizes
- Easier installation - lower cost for labor
- Low maintenance
- Durability 50 year + life expectancy
- 4 times stronger than poured concrete
- Withstands freeze-thaw conditions
- Pavers are a flexible system and allow for movement
- Sealer - does not require sealant but can be sealed



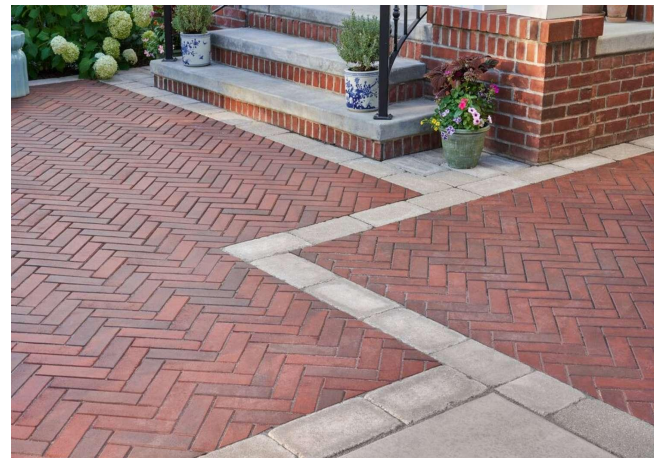
### **Natural stone - cost \$14 to \$24+ per sq ft**

- Higher cost - typical bluestone averages \$18 sq ft
- Higher install cost - natural stones do not typically come in perfect sizes for height, length, and width.
- Non-slip surface
- Environmental responsibility if a local sourced stone is selected like limestone
- Color integrity
- Sealer - should be resealed every three years
- Porous material can have some freeze thaw issues



### **Clay Pavers - cost \$7 to \$12 per sq ft**

- Durability and strength - 50 years plus
- Long term cost benefits
- Non-slip surface
- Environmentally responsible
- Excellent color integrity - more limited choices
- Low maintenance
- Does not require sealing - not recommended
- Withstands freeze-thaw conditions



### Porcelain - cost \$12 to \$20+

- Higher cost
- Higher installation costs - Material is only 3/4" thick and needs a more complicated base system as well as more difficult to cut.
- Durability 50 year + life expectancy
- Lots of styles and colors
- Very low maintenance - does not stain - chemical resistant
- Good choice for covering over concrete with mortar
- Withstands freeze-thaw conditions



### Pavers are sold in several different ways

- Full pallet - sometimes you must buy a full pallet of the material which averages 85 to 105 square feet. For example, if you want a 250 square foot patio then you may be paying for additional material.
- By the layer - Sometimes you can buy the pavers by the layer. Each pallet typically has 8 to 10 layers and each layer will be around 10 sq ft on average.
- By the brick - Some pavers you can buy individual bricks.
- Patterns - Some pavers only come in mixed size bundles that have several different sizes in a layer. This can cause you to have some material that may not fit your size patio exactly causing you to pay for some additional material.

### Installation costs

- Pattern cost - A good example would be if you choose large format pavers that come in a mixed size pattern. If the pavers you choose do not fit the size of the patio planned then there is additional material that must be cut off and recycled.
- Herringbone pattern - A popular pattern with regular 4" x 8" bricks. This pattern needs lots of cuts around the perimeter. This can add quite a bit of labor and throw away if the walkway or patio has curves.
- Curves - Curves add labor costs and additional material that is cut off and recycled.



Herringbone pattern example



Patio with curves example